

Service Manual

Video Monitor WV-5340A



For Service Manuals
contact
MAURITRON SERVICES
8 Cherry Tree Road, Chinnor
Oxfordshire, OX9 4QY.
Tel (01844) 351694
Fax (01844) 352554

SPECIFICATIONS

TV System:

WV-5340A/B, WV-5340A/C, WV-5340A/G: CCIR standard

WV-5340AN/A, WV-5340AN/C: CCIR standard

WV-5340AN: USA standard

Power Source:

WV-5340A/B: 240V AC, 50Hz

WV-5340A/C, WV-5340A/G: 220V A

WV-5340AN/A: 240V AC, 50Hz

WV-5340AN/C: 220V AC, 50Hz

WV-5340AN: 115V/230V AC, 50/60Hz

Approx. 23W

Power Consumption:

Picture Size:

9 inches (diagonally measured), 90° deflection

Video Input Impedance:

75Ω or high impedance

Video Input Level:

1.0 Vp-p composite (0.5 Vp-p~2.0 Vp-p)

Resolution:

More than 750 lines (Horizontal at centre)

Horizontal Scanning Frequency:

CCIR standard: 15.625kHz

USA standard: 15.75kHz

Vertical Scanning Frequency:

CCIR standard: 50Hz

USA standard: 60Hz

Sweep Linearity:

Less than 5%

Sweep Geometry:

Less than 2%

Operating Ambient Temperature:

-10°C~+50°C

Operating Ambient Humidity:

Less than 90%

Dimensions:

221(W) × 228(H) × 265(D) mm

Weight:

5.2 kg

Weights and dimensions shown are approximate.
Specifications are subject to change without notice.

LOCATION OF ADJUSTING CONTROLS

VIDEO/DEFLECTION BOARD

VL201
H. WIDTH

VR205
FOCUS

For Service Manuals
contact
MAURITRON SERVICES
8 Cherry Tree Road, Chinnor
Oxfordshire, OX9 4QY
Tel (01844) 351694
Fax (01844) 352554

VR203
V. LIN

VR103
SUB
BRIGHTNESS

VR201
V. HEIGHT

VR204
H. HOLD

CONTROL PANEL

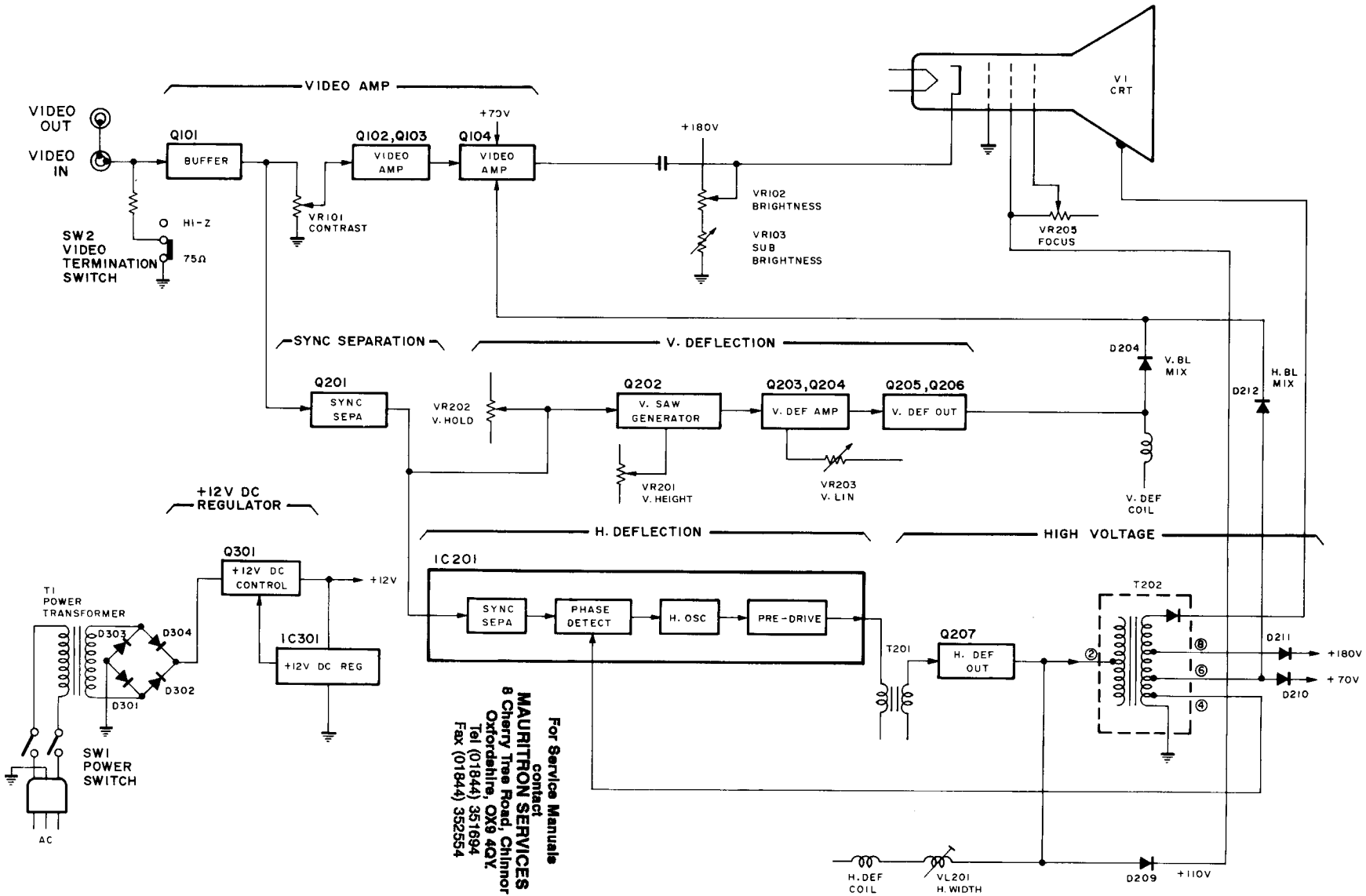
POWER
SWITCH

VR202
V. HOLD

VR102
BRIGHTNESS

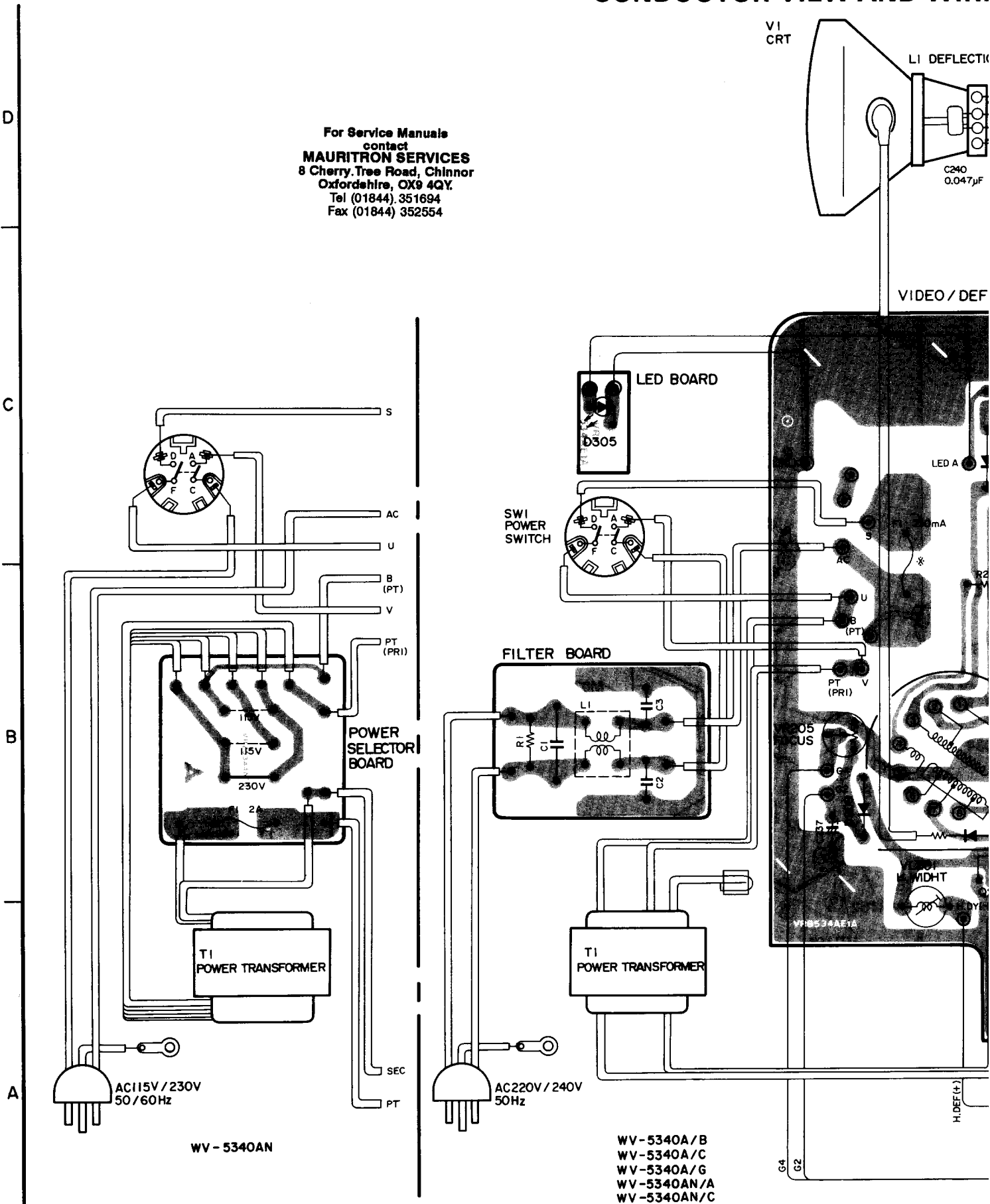
VR101
CONTRAST

BLOCK DIAGRAM

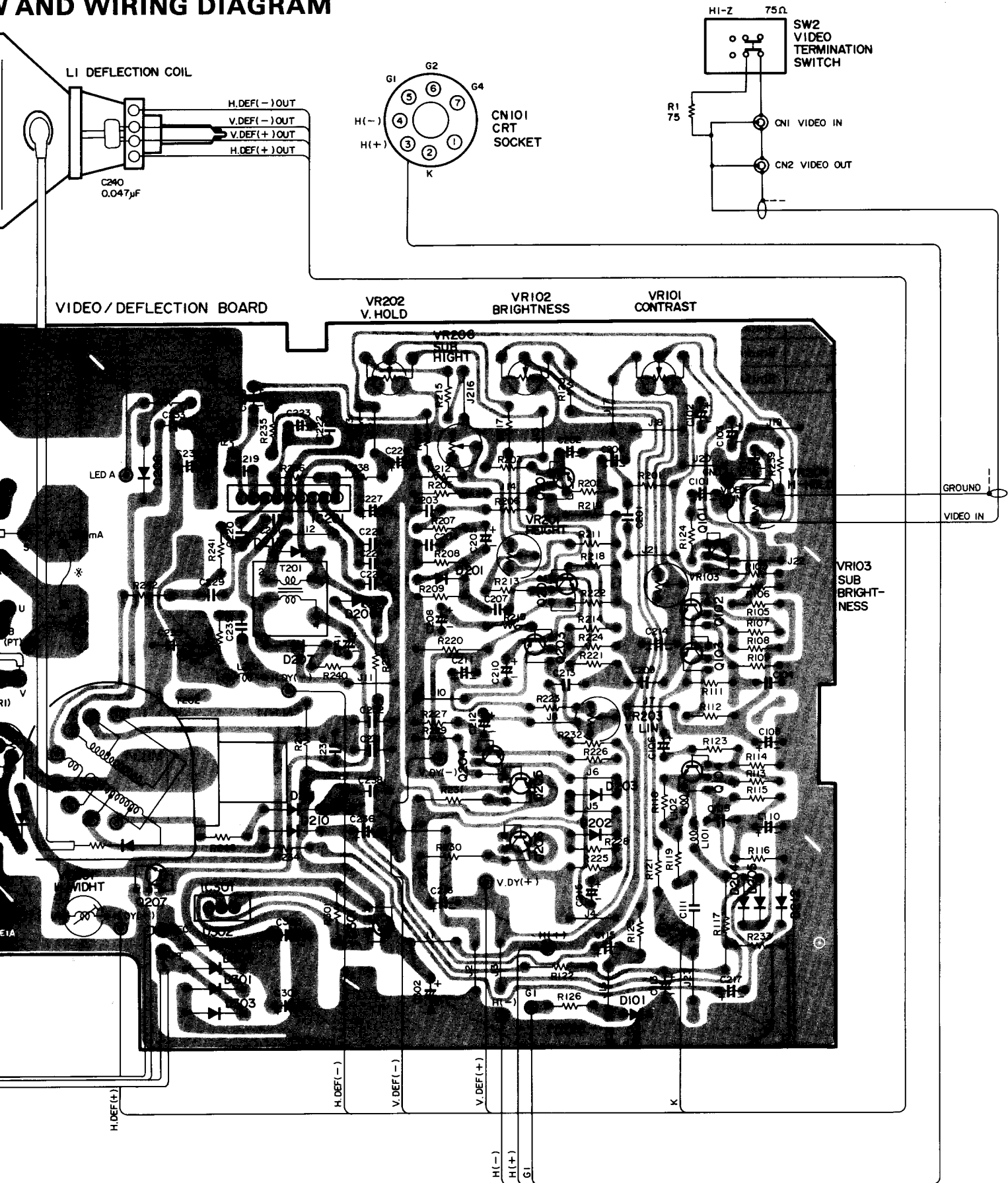


CONDUCTOR VIEW AND WIRING

**For Service Manuals
contact
MAURITRON SERVICES
8 Cherry Tree Road, Chinnor
Oxfordshire, OX9 4QY.
Tel (01844) 351694
Fax (01844) 352554**



V AND WIRING DIAGRAM

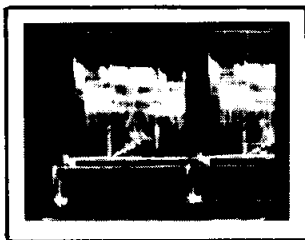


SIGNAL WAVEFORMS

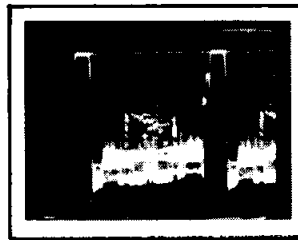
1 0.2V/DIV, 10 μ s/DIV



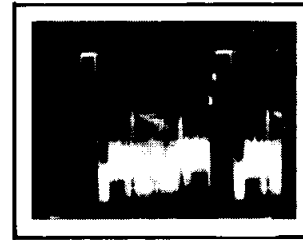
2 0.2V/DIV, 10 μ s/DIV



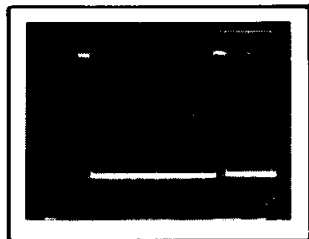
3 5V/DIV, 10 μ s/DIV



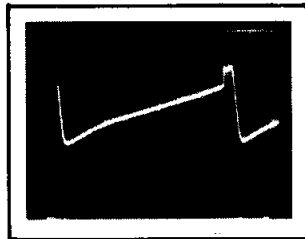
4 5V/DIV, 10 μ s/DIV



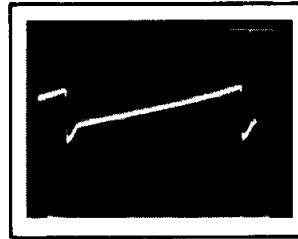
5 2V/DIV, 10 μ s/DIV



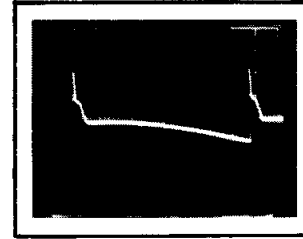
6 0.5V/DIV, 2ms/DIV



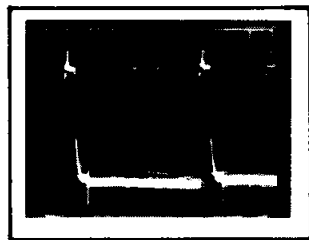
7 0.5V/DIV, 2ms/DIV



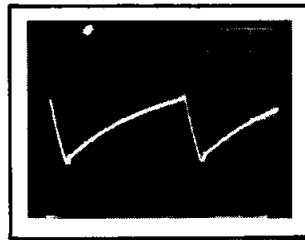
8 5V/DIV, 2ms/DIV



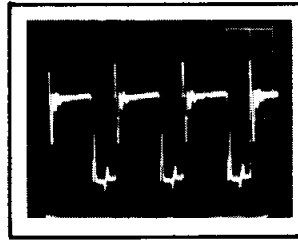
9 0.2V/DIV, 10 μ s/DIV



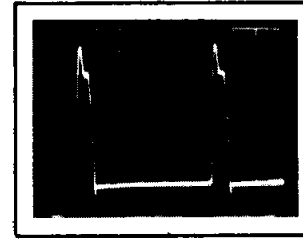
10 0.5V/DIV, 10 μ s/DIV



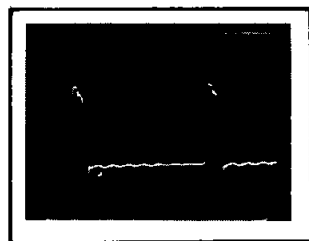
11 2V/DIV, 20 μ s/DIV



12 20V/DIV, 10 μ s/DIV



13 20V/DIV, 10 μ s/DIV



For Service Manuals
contact
MAURITRON SERVICES
8 Cherry Tree Road, Chinnor
Oxfordshire, OX9 4QY.
Tel (01844) 351694
Fax (01844) 352554